

Smoking and Household Income, New Brunswick, 2007-2008

SMOKING STATUS BY HOUSEHOLD INCOME DECILE (PROVINCIAL LEVEL), NEW BRUNSWICK 2007-2008

NUMBER OF PEOPLE AGES 12+

	Decile 1	Decile 2	Decile 3	Decile 4	Decile 5	Decile 6	Decile 7	Decile 8	Decile 9	Decile 10
Daily	18,362	12,952	10,451	13,781	10,701	9,531	9,988	10,295	7,186	5,500
Current	20,103	15,087	11,214	14,656	13,453	10,863	12,458	12,677	9,931	7,790
Former	14,542	20,592	23,425	19,258	25,035	23,207	22,160	20,045	24,753	28,131
Never	18,174	18,518	19,223	20,165	15,851	21,584	19,031	22,638	18,192	17,614
Total	68,004	69,637	70,378	68,146	70,281	70,059	67,904	69,749	67,209	68,393

PREVALENCE AND QUIT RATIO, AGES 12+

	Decile 1	Decile 2	Decile 3	Decile 4	Decile 5	Decile 6	Decile 7	Decile 8	Decile 9	Decile 10
Daily	27.0%	18.6%	14.8%	20.2%	15.2%	13.6%	14.7%	14.8%	10.7%	8.0%
Current	29.6%	21.7%	15.9%	21.5%	19.1%	15.5%	18.3%	18.2%	14.8%	11.4%
Never	26.7%	26.6%	27.3%	29.6%	22.6%	30.8%	28.0%	32.5%	27.1%	25.8%
quit ratio	0.72	1.36	2.09	1.31	1.86	2.14	1.78	1.58	2.49	3.61

NUMBER OF MEN, AGES 12+

	Decile 1	Decile 2	Decile 3	Decile 4	Decile 5	Decile 6	Decile 7	Decile 8	Decile 9	Decile 10
Current	6,538	7,197	5,601	6,498	8,239	6,086	8,521	8,597	5,848	5,505
Former	6,534	10,064	12,365	9,076	14,042	12,420	12,456	12,861	13,995	16,741
Never	6,229	5,993	10,143	7,891	6,637	9,187	9,545	9,104	8,261	8,503
Total	19,301	23,254	28,109	23,465	28,918	27,693	30,522	30,562	28,104	30,749

PREVALENCE AND QUIT RATIO, MEN 12+

	Decile 1	Decile 2	Decile 3	Decile 4	Decile 5	Decile 6	Decile 7	Decile 8	Decile 9	Decile 10
Current	33.9%	30.9%	19.9%	27.7%	28.5%	22.0%	27.9%	28.1%	20.8%	17.9%
Never	32.3%	25.8%	36.1%	33.6%	23.0%	33.2%	31.3%	29.8%	29.4%	27.7%
quit ratio	1.00	1.40	2.21	1.40	1.70	2.04	1.46	1.50	2.39	3.04

NUMBER OF WOMEN, AGES 12+

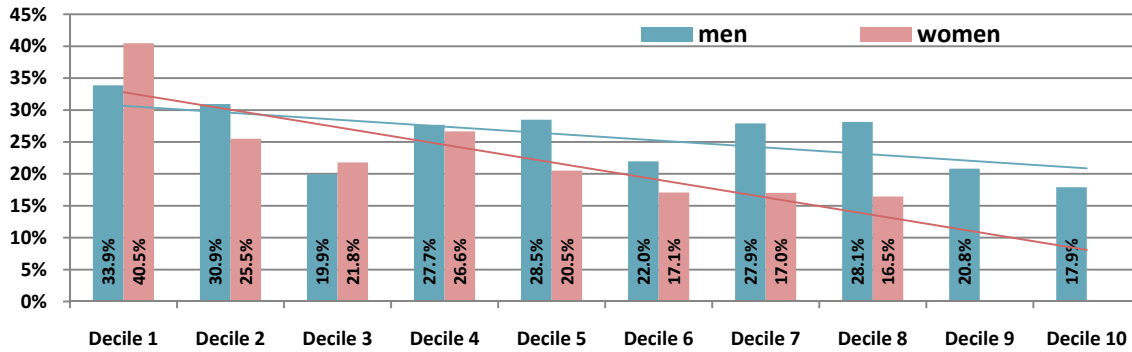
	Decile 1	Decile 2	Decile 3	Decile 4	Decile 5	Decile 6	Decile 7	Decile 8	Decile 9	Decile 10
Current	13,565	7,890	5,613	8,158	5,214	4,777	3,937			
Former	8,008	10,528	11,060	10,182	10,993	10,787	9,704	7,184	10,758	11,390
Never	11,945	12,525	9,080	12,274	9,214	12,397	9,486	13,534	9,931	9,111
Total	33,518	30,943	25,753	30,614	25,421	27,961	23,127	24,798	24,772	22,786

PREVALENCE AND QUIT RATIO, WOMEN 12+

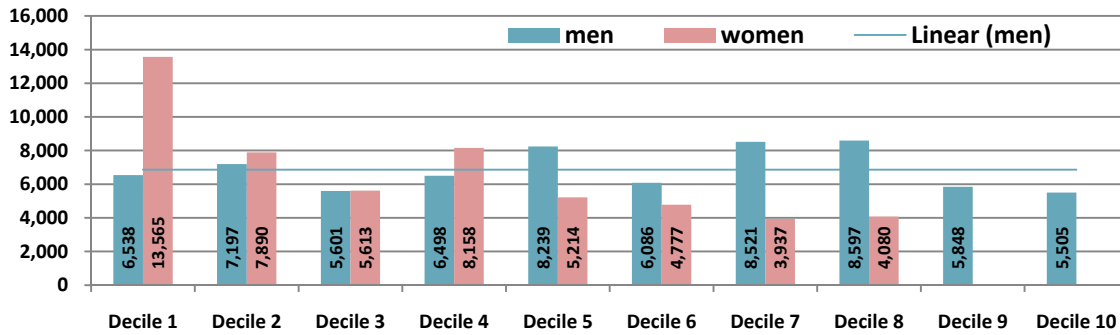
	Decile 1	Decile 2	Decile 3	Decile 4	Decile 5	Decile 6	Decile 7	Decile 8	Decile 9	Decile 10
Current	40.5%	25.5%	21.8%	26.6%	20.5%	17.1%	17.0%	16.5%		
Never	35.6%	40.5%	35.3%	40.1%	36.2%	44.3%	41.0%	54.6%	40.1%	40.0%
quit ratio	0.59	1.33	1.97	1.25	2.11	2.26	2.46	1.76		

* suppressed due to low cell size.

PREVALENCE OF CURRENT SMOKING, MEN AND WOMEN, BY PROVINCIAL INCOME DECILE, NEW BRUNSWICK, 2007-2008



NUMBER OF SMOKERS, MEN AND WOMEN, BY PROVINCIAL INCOME DECILE, NEW BRUNSWICK, 2007-2008



SMOKING STATUS BY HOUSEHOLD INCOME, NEW BRUNSWICK 2007-2008

NUMBER OF PEOPLE, AGES 12+

	NO OR <\$20,000	\$20,000-\$39,999	\$40,000-\$59,999	\$60,000-\$79,999	\$80,000 OR MORE	Total
daily	19,188	30,161	25,320	19,832	14,251	108,752
occasional	*	*	*	*	*	19,484
current	21,087	33,556	28,769	23,944	20,880	128,236
former	20,878	54,328	44,352	36,598	64,991	221,147
never	18,083	43,847	37,750	34,945	56,364	190,989
Total	60,048	131,731	110,871	95,487	142,235	540,372

PREVALENCE AND QUIT RATIO, AGES 12+

	NO OR <\$20,000	\$20,000-\$39,999	\$40,000-\$59,999	\$60,000-\$79,999	\$80,000 OR MORE	Total
Daily	32.0%	22.9%	22.8%	20.8%	10.0%	20.1%
Current	35.1%	25.5%	25.9%	25.1%	14.7%	23.7%
Never	1.0	1.6	1.5	1.5	3.1	1.7
Quit ratio	32.0%	22.9%	22.8%	20.8%	10.0%	20.1%

NUMBER OF MEN, AGES 12+

	NO OR <\$20,000	\$20,000-\$39,999	\$40,000-\$59,999	\$60,000-\$79,999	\$80,000 OR MORE	Total
daily	7,159	15,064	14,378	12,162	10,011	58,774
occasional	*	*	*	*	*	9,854
current	7,497	16,200	16,655	14,331	13,945	68,628
former	9,275	28,782	22,790	21,102	38,607	120,556
never	4,405	17,895	16,451	16,768	25,970	81,489
Total	74,941	162,445	138,862	110,921	202,571	689,740

PREVALENCE AND QUIT RATIO, MEN 12+

	NO OR <\$20,000	\$20,000-\$39,999	\$40,000-\$59,999	\$60,000-\$79,999	\$80,000 OR MORE	Total
Daily	33.8%	24.0%	25.7%	23.3%	12.7%	21.7%
Current	35.4%	25.8%	29.8%	27.5%	17.8%	25.4%
Never	1.2	1.8	1.4	1.5	2.8	1.8
Quit ratio	33.8%	24.0%	25.7%	23.3%	12.7%	21.7%

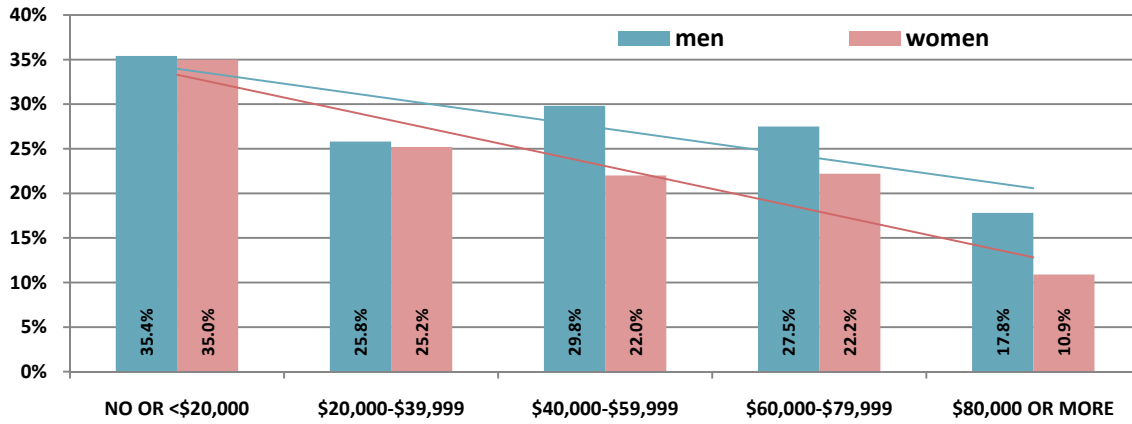
NUMBER OF WOMEN, AGES 12+

	NO OR <\$20,000	\$20,000-\$39,999	\$40,000-\$59,999	\$60,000-\$79,999	\$80,000 OR MORE	Total
daily	12,029	15,097	10,942	7,670	4,240	49,978
occasional						9,630
current	13,590	17,356	12,114	9,613	6,935	59,608
former	11,603	25,546	21,562	15,496	26,384	100,591
never	13,678	25,952	21,299	18,177	30,394	109,500
Total	38,871	68,854	54,975	43,286	63,713	269,699

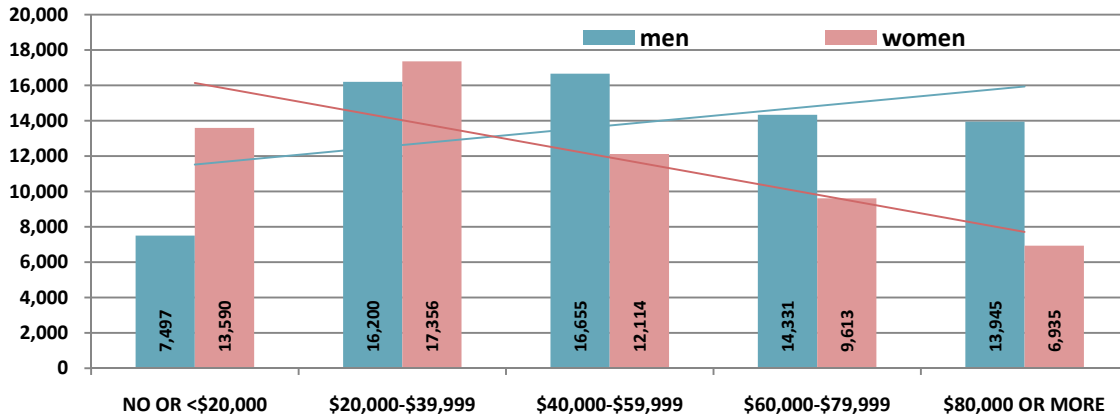
PREVALENCE AND QUIT RATIO, WOMEN 12+

	NO OR <\$20,000	\$20,000-\$39,999	\$40,000-\$59,999	\$60,000-\$79,999	\$80,000 OR MORE	Total
Daily	30.9%	21.9%	19.9%	17.7%	6.7%	18.5%
Current	35.0%	25.2%	22.0%	22.2%	10.9%	22.1%
Never	0.9	1.5	1.8	1.6	3.8	1.7
Quit ratio	30.9%	21.9%	19.9%	17.7%	6.7%	18.5%

PREVALENCE OF CURRENT SMOKING, MEN AND WOMEN, BY HOUSEHOLD INCOME LEVEL, NEW BRUNSWICK 2007-2008



NUMBER OF SMOKERS, MEN AND WOMEN, BY HOUSEHOLD INCOME LEVEL, NEW BRUNSWICK 2007-2008



Sources: Canadian Community Health Survey, Statistics Canada. 2007-2008 Public Use Micro File

Those who replied “don’t know” or who refused to answer are not included