

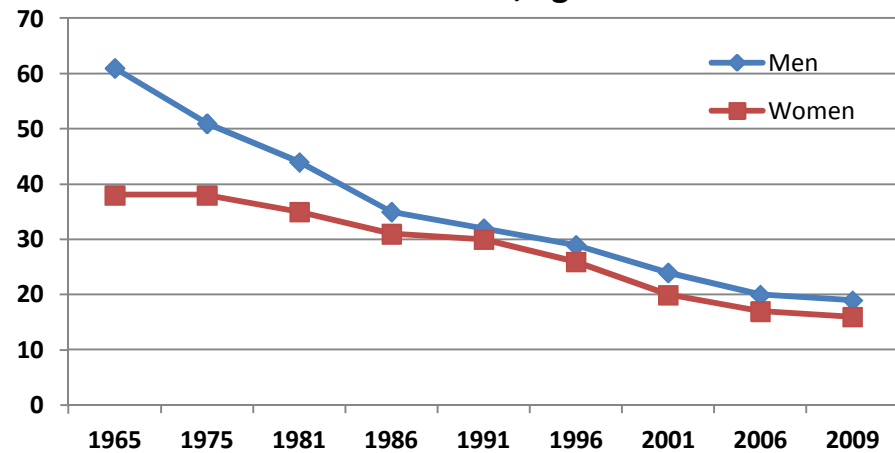


Smoking in Canada

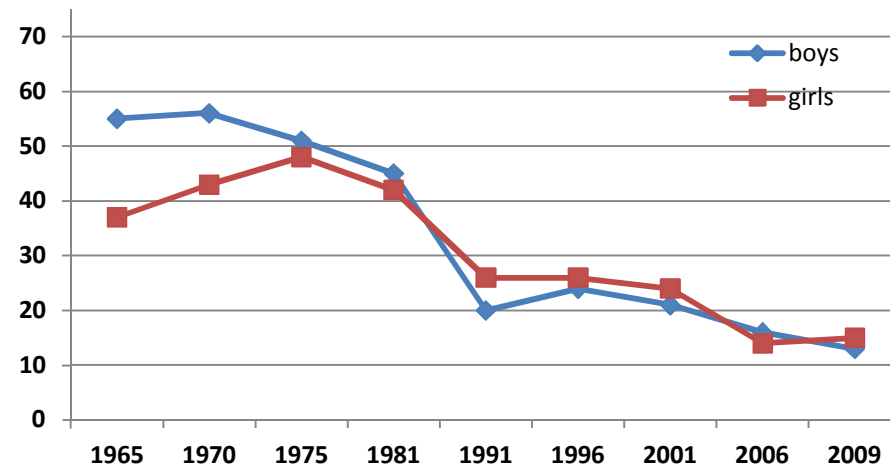
Percentage of Canadians who smoke (on either a daily or occasional basis), federal surveys by Health Canada* and others, 1965-2011

	1965	1970	1974	1975	1977	1978	1979	1981	1983	1985	1986	1989	1990	1991	1994 (1)	1994 (2)	1994 (3)	1994 (4)	1994 (5)	1995	1996 (1)	1996 (2)	1996- 97 (3)	1999 (1)	1999 (2)	2000	2001	2002	2003	2004	2005	2006	2007	2008	2009	2010	2011																												
15 +																																																																	
Total	49.5	46.5	45.5	44.5	43	40.5	41	39.5	37.5	34	33	32	31	31	31	30.1	29.7	27.4	29.6	26	27	36	28.9	28	25	24	22	21	21	20	19	19	19	18	18	17																													
Men	61	55	52	51	48	44	45	44	41	36	35	33.4	31	32	32	31.2	30.9	29.4	31.2	28	29	38	31.5	28	27	26	24	23	23	22	22	20	20	20	19	20																													
Women	38	38	39	38	38	37	37	35	34	32	31	30.5	28	30	29	29	28.5	25.5	27.5	25	26	34	26.3	27	23	23	20	20	18	17	16	17	18	16	16	14																													
15-17																																																																	
Boys																																																																	
Girls																																																																	
All																																																																	
18-19																																																																	
Boys																																																																	
Girls																																																																	
All																																																																	
15 - 19																																																																	
Boys	55	56	54	51	49	36	47	45	38	27	24	21.7	21	20	26	27	26.4	25.1	27.5	24	24		27.3																																										
Girls	37	43	48	48	47	40	46	42	39	28	28	23.5	21	26	29	30.2	29.2	26.3	29.5	24	26		31.0																																										
All																																																																	
20-24																																																																	
Men	69	61	59	56	53	52	49	48	44	40	38	37.1	35	44	41	39.7	39	36.5	33.0	34	36		39.0																																										
Women	50	52	50	49	51	50	49	50	48	43	39	37.7	34	35	38	36.7	33.7	31.4	37.8	31	36		31.9																																										
All																																																																	
25+																																																																	
Men																																																																	
Women																																																																	
All																																																																	

**Smoking prevalence,
men and women, aged 15+**



**Smoking prevalence,
boys and girls, aged 15-19**



**Smoking prevalence,
young adult men and women, aged 20-24**

