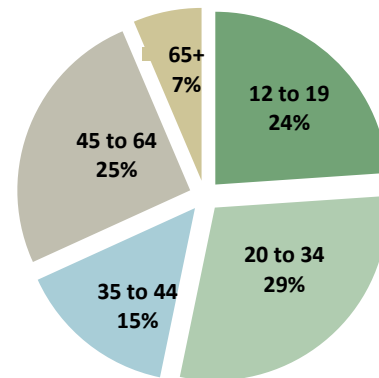


Exposure to second hand smoke in public places Canada, 2010

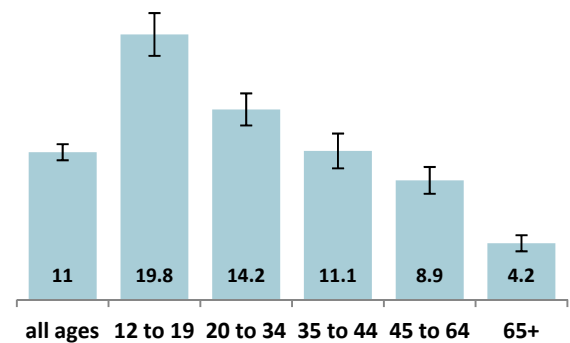
Key findings

- The number of non-smoking Canadians who report being exposed to second hand smoke in the past month fell significantly between 2003 and 2010.
- The number of non-smoking Canadians who report being exposed in public places has fallen by almost one half (from 19.7% to 11%).
- In 2010, slightly more than one-tenth of Canadians reported having been exposed to second hand smoke in the past month
- The age group most likely to report being exposed either in public places is young Canadians aged 12-19. The rate of exposure for this group (19.8%) is almost twice as high as the national average.

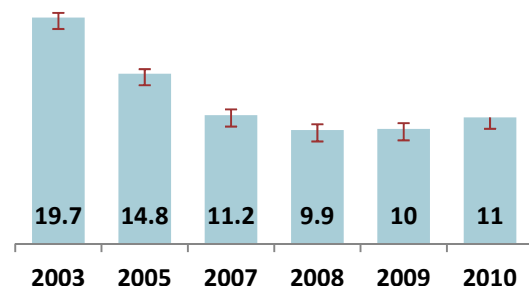
Distribution of non-smokers exposed to second hand in public places by age, 2010



Percentage of non-smokers exposed to second hand smoke in public places in past month, by age, 2010



Percentage of non-smokers in Canada reporting exposure to second-hand smoke in public places in past month, 2003-2010



NON-SMOKERS' EXPOSURE TO SECOND HAND SMOKE IN PUBLIC PLACES, PAST MONTH, 2003-2010

	2003	2005	2007	2008	2009	2010
	<i>Number of people</i>	<i>Number of people</i>	<i>Number of people</i>	<i>Number of people</i>	<i>Number of people</i>	<i>Number of people</i>
Canada	3,987,087	3,116,444	2,408,655	2,183,461	2,261,042	2,488,791
• Newfoundland and Labrador	48,114	34,840	26,944	20,031	20,107	20,056
• Prince Edward Island	11,962	5,115	6,032	E5,711	E5,986	E5,658
• Nova Scotia	94,835	56,561	58,454	49,544	48,143	48,604
• New Brunswick	90,262	33,388	38,822	35,688	40,334	32,974
• Quebec	1,272,149	1,116,285	496,124	422,379	408,443	463,145
• Ontario	1,404,967	1,077,585	994,478	983,026	1,006,670	463,145
• Manitoba	137,232	44,799	63,604	59,932	67,972	83,851
• Saskatchewan	144,009	58,572	45,125	45,076	44,702	50,979
• Alberta	422,594	374,766	335,500	235,439	245,995	235,444
• British Columbia	348,953	309,185	340,777	323,956	370,693	368,544
• Yukon	4,238	1,497	E867	E1,006	E581	E732
• Northwest Territories	6,738	3,078	E1,250	E770	E946	E1,684
• Nunavut	1,035	774	F	903	F	R

*Statistics Canada: Canadian Community Health Survey, 2009;
E=Interpret with caution; F=failed*

	2003	2005	2007	2008	2009	2010
	<i>Number of people</i>	<i>Number of people</i>	<i>Number of people</i>	<i>Number of people</i>	<i>Number of people</i>	<i>Number of people</i>
All ages	3,987,087	3,116,444	2,408,655	2,183,461	2,261,042	2,488,791
• Men	2,184,463	1,694,594	1,221,865	1,093,203	1,199,166	1,261,648
• Women	1,802,623	1,421,851	1,186,789	1,090,258	1,061,876	1,227,142
• 12 to 19	786,444	722,042	603,680	499,137	540,892	581,116
• 20 - 34	1,174,628	891,767	637,441	653,563	663,143	689,548
• 35 - 44	719,619	517,670	389,469	341,262	337,760	403,000
• 45 - 64	1,013,534	793,261	621,430	555,824	574,349	648,282
• 65+	292,861	191,705	156,634	133,673	144,898	166,845

*Statistics Canada: Canadian Community Health Survey, 2009;
E=Interpret with caution; F=failed*

	2003	2005	2007	2008	2009	2010
	Percentage of Population	Percentage of Population	Percentage of Population	Percentage of Population	Percentage of Population	Percentage of Population
Canada	19.7 19.3 - 20.1	14.8 14.4- 15.1	11.2 10.7- 11.7	9.9 9.4- 10.4	10.0 9.5-10.4	11 10.4-11.5
• Newfoundland and Labrador	13.8 12.2-15.5	10.1 8.5-11.7	8.2 6.4-10	6 4.4-7.6	5.9 4.5-7.2	5.9 4.4-7.3
• Prince Edward Island	13.2 11-15.3	5.6 4.1-7.2	6.5 4.8-8.2	E6.0 3.9-8.2	E6.2 4.1-8.3	6.0 3.9-8.2
• Nova Scotia	15.7 13.7-17.6	9.2 8-10.4	9.7 8-11.4	8.1 6.5-9.7	7.8 6.1-9.5	7.8 6.0-9.7
• New Brunswick	19.1 17.4-20.7	6.8 5.6-8	7.9 6.4-9.4	7.2 5.7-8.8	8 6.3-9.7	6.6 4.9-8.3
• Quebec	27.2 26.1-28.3	22.9 22-23.7	10.1 9.1-11.1	8.4 7.5-9.2	7.9 7.1-8.8	9 8-10
• Ontario	17.9 17.3-18.5	13.1 12.5-13.6	11.7 10.8-12.5	11.3 10.4-12.1	11.2 10.3-12	13.1 12.1-14.1
• Manitoba	19.6 17.8-21.3	6.1 4.9-7.2	8.7 6.7-10.7	8.3 6.5-10.1	8.9 6.8-10.9	10.6 8.5-12.7
• Saskatchewan	23.8 22.2-25.5	9.8 8.5-11.1	7.7 6.3-9.2	7.5 6.2-8.8	7.0 5.7-8.4	8.0 6.6-9.4
• Alberta	21.3 19.9-22.7	18.2 16.9-19.4	15.1 13.2-16.9	10.5 9-11.9	10.8 9-12.5	9.9 8.5-11.3
• British Columbia	12.3 11.4-13.1	10.5 9.7-11.3	11.2 10.1-12.4	10.6 9.3-11.8	11.5 10.3-12.6	11.6 10.3-12.8
• Yukon	23.5 18.3-28.7	E7.9 4.7-11.1	E5.1 2.3-7.8	E5.4 2.7-8.1	E3.2 1.2-5.3	E3.5 1.2-5.7
• Northwest Territories	32.0 26.6-37.4	13.9 10.7-17.1	E6.0 2.9-9.2	E3.4 1.3-5.5	E4.3 1.9-6.6	E8.2 5.7-10.6
• Nunavut	E21.4 13.3-29.6	E11.0 4.9-17.1	F	F	F	f

Statistics Canada: Canadian Community Health Survey, 2009;

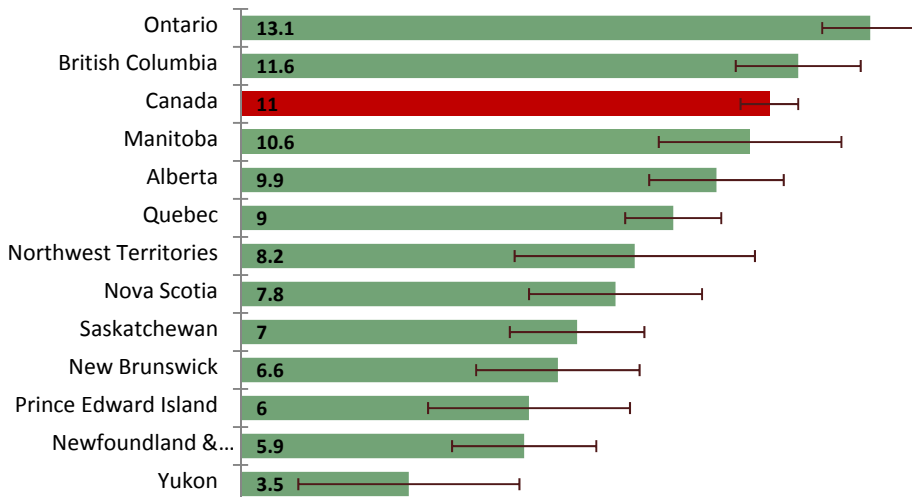
E=Interpret with caution; F=failed

	2003	2005	2007	2008	2009	2010
	Percentage of Population	Percentage of Population	Percentage of Population	Percentage of Population	Percentage of Population	Percentage of Population
All ages	19.7 19.3 - 20.1	14.8 14.4- 15.1	11.2 10.7- 11.7	9.9 9.4- 10.4	10.0 9.5-10.4	11 10.4-11.5
• Men	22.5 21.9-23.2	16.7 16.2-17.3	11.9 11.3-12.6	10.5 9.8-11.1	11.1 10.3-11.8	11.8 11.0-12.5
• Women	17.1 16.6-17.6	13 12.5-13.4	10.5 9.9-11.1	9.5 8.8-10.1	9.0 8.3-9.6	10.2 9.5-11
• 12 to 19	28.1 27.1-29.2	24.7 23.7-25.7	20.5 19-22	16.8 15.5-18.1	18.1 16.7-19.5	19.8 18.2-21.3
• 20 - 34	26.9 25.7-28	19.6 18.6-20.5	13.7 12.6-14.7	13.9 12.6-15.1	13.5 12.4-14.7	14.2 13.0-15.4
• 35 - 44	19.2 18.1-20.2	14 13.3-14.8	10.9 9.8-12	9.4 8.4-10.5	9.1 8.1-10.1	11.1 9.8-12.3
• 45 - 64	16.9 16.2-17.6	12.3 11.7-12.9	9.2 8.4-10	8.0 7.3-8.7	8.0 7.1-8.9	8.9 7.9-9.9
• 65+	8.8 8.3-9.4	5.5 5.1-5.9	4.3 3.7-4.9	3.6 3.1-4.1	3.7 3.2-4.2	4.2 3.6-4.7

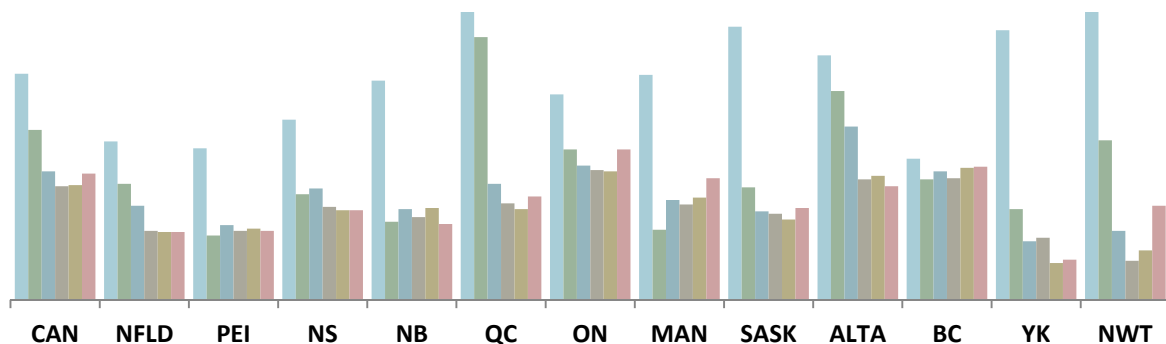
Statistics Canada: Canadian Community Health Survey, 2009;

E=Interpret with caution; F=failed

Percentage of non-smokers reporting exposure to second-hand smoke in public places in past month, 2010



Percentage of non-smokers in Canada reporting exposure to second-hand smoke in public places in past month, by province 2003-2010



The data on this fact sheet were derived from the Canadian Community Health Surveys (Cycle 2.1, 2.2 and 2007, 2008, 2009 and 2010) as provided by Statistics Canada.

Further information on survey methodology can be found at: <http://www.statcan.gc.ca/dli-ild/data-donnees/ftp/cchs-escs-eng.htm>

The questions used on the CCHS survey were:

- “In the past month, were you exposed to second-hand smoke every day or almost every day in public places (such as bars, restaurants, shopping malls, arenas, bingo halls, bowling alleys)?” (Yes/No)