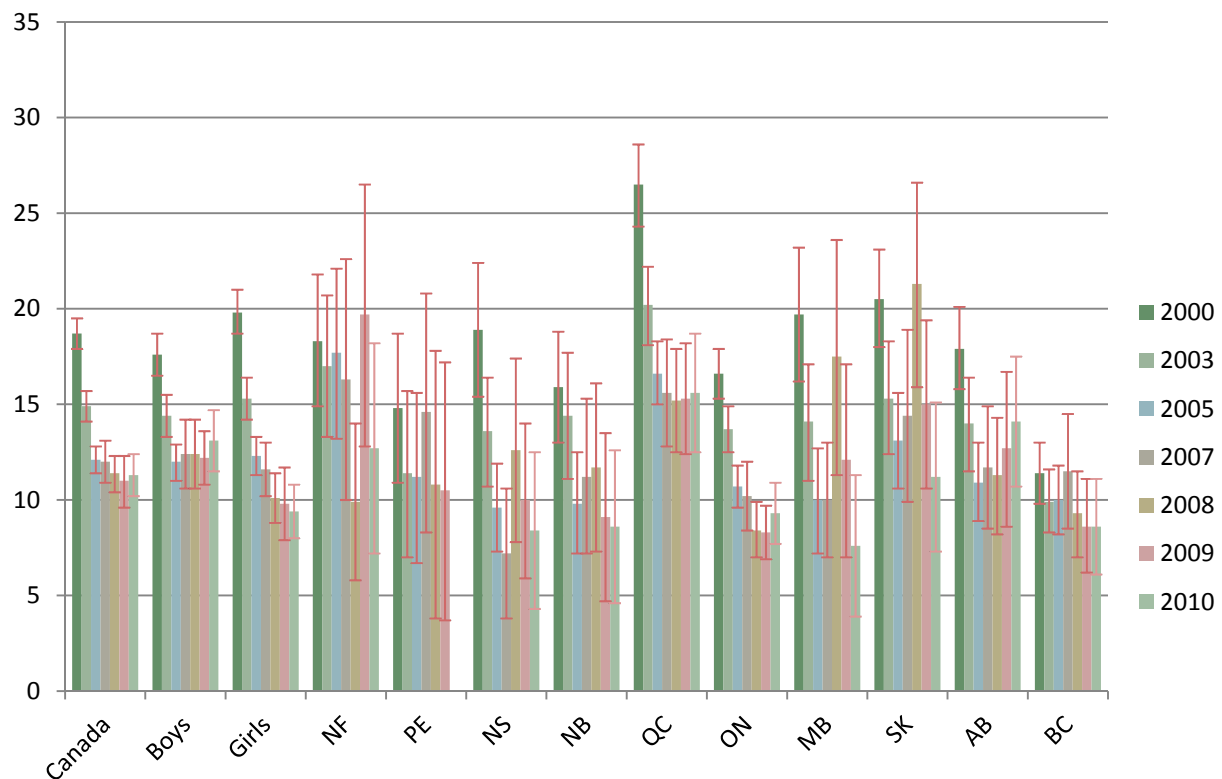


Smoking among young Canadians by province, 2000-2010

Key findings

- The number and percentage of young Canadians (aged 12 to 19) who smoked fell by about 40% in less than a decade.
- The differences between smoking rates in Canadian provinces have narrowed: where British Columbia has significantly lower youth smoking rates in 2000, other provinces are now reporting rates as low as those in B.C.

CURRENT SMOKING, DAILY AND OCCASIONAL, CANADIANS AGED 12 – 19 YEARS OF AGE 2000-2009



NUMBER OF SMOKERS, AGED 12 TO 19 YEARS OF AGE WHO SMOKE ON A DAILY OR OCCASIONAL BASIS

| | 2000 | 2003 | 2005 | 2007 | 2008 | 2009 | 2010 |
|----------------------------------|---------|---------|---------|---------|---------|---------|---------|
| Canada | 605,558 | 490,296 | 405,109 | 403,212 | 382,961 | 371,279 | 375,512 |
| • Boys | 292,307 | 244,103 | 204,113 | 213,296 | 216,498 | 210,318 | 222,712 |
| • Girls | 313,250 | 246,193 | 200,996 | 189,916 | 166,463 | 160,961 | 152,800 |
| Newfoundland and Labrador | 11,311 | 9,855 | 9,415 | E8,098 | E4,842 | E9,489 | E6,012 |
| Prince Edward Island | E2,420 | E1,883 | E1,812 | E2,257 | E1,700 | E1,640 | F |
| Nova Scotia | 18,938 | 13,648 | 9,325 | E6,745 | E11,691 | E9,079 | E7,455 |
| New Brunswick | 12,596 | 11,223 | 7,427 | E8,252 | E8,569 | E6,567 | E6,033 |
| Quebec | 191,957 | 146,822 | 124,459 | 117,844 | 114,481 | 114,475 | 116,771 |
| Ontario | 205,459 | 176,428 | 141,503 | 137,328 | 114,055 | 112,568 | 124,060 |
| Manitoba | 23,945 | 17,275 | 12,343 | 12,311 | E21,743 | E15,071 | E9,515 |
| Saskatchewan | 24,046 | 17,381 | 14,122 | 15,138 | 22,392 | 15,698 | E11,566 |
| Alberta | 62,485 | 49,538 | 39,200 | 42,649 | 40,940 | 46,171 | 51,214 |
| British Columbia | 47,706 | 42,192 | 42,481 | 48,738 | 39,452 | 37,166 | 36,492 |

Statistics Canada: Canadian Community Health Survey, 2009; E=Interpret with caution; F=failed

PERCENTAGE OF POPULATION AGED 12 TO 19 YEARS OF AGE WHO SMOKE ON A DAILY OR OCCASIONAL BASIS

| | 2000 | 2003 | 2005 | 2007 | 2008 | 2009 | 2010 |
|----------------------------------|-----------|-----------|-----------|-----------|-----------|-----------|-----------|
| Canada | 18.7 | 14.9 | 12.1 | 12 | 11.4 | 11 | 11.3 |
| | 17.9-19.5 | 14.1-15.7 | 11.4-12.8 | 10.9-13.1 | 10.4-12.3 | 10-12.1 | 10.2-12.4 |
| • Boys | 17.6 | 14.4 | 12 | 12.4 | 12.6 | 12.2 | 13.1 |
| | 16.5-18.7 | 13.3-15.5 | 11-12.9 | 10.6-14.2 | 11.1-14 | 10.8-13.7 | 11.5-14.7 |
| • Girls | 19.8 | 15.3 | 12.3 | 11.6 | 10.1 | 9.8 | 9.4 |
| | 18.7-21 | 14.2-16.4 | 11.3-13.3 | 10.2-13 | 8.8-11.4 | 8.4-11.2 | 8.0-10.8 |
| Newfoundland and Labrador | 18.3 | 17 | 17.7 | E16.3 | E9.9 | E19.7 | E12.7 |
| | 14.9-21.8 | 13.3-20.7 | 13.2-22.1 | 10-22.6 | 5.8-14 | 12.8-26.5 | 7.3-18.2 |
| Prince Edward Island | E14.8 | E11.4 | E11.2 | E14.6 | E10.8 | E10.5 | F |
| | 10.9-18.7 | 7-15.7 | 6.7-15.6 | 8.3-20.8 | 3.8-17.8 | 3.7-17.2 | |
| Nova Scotia | 18.9 | 13.6 | 9.6 | E7.2 | E12.6 | E10 | E8.4 |
| | 15.4-22.4 | 10.7-16.4 | 7.3-11.9 | 3.8-10.6 | 7.8-17.4 | 5.9-14 | 4.2-12.5 |
| New Brunswick | 15.9 | 14.4 | 9.8 | E11.2 | E11.7 | E9.1 | E8.6 |
| | 13-18.8 | 11.1-17.7 | 7.2-12.5 | 7.2-15.3 | 7.3-16.1 | 4.7-13.5 | 4.5-12.6 |
| Quebec | 26.5 | 20.2 | 16.6 | 15.6 | 15.2 | 15.3 | 15.6 |
| | 24.3-28.6 | 18.1-22.2 | 15-18.3 | 12.8-18.4 | 12.5-17.9 | 12.4-18.2 | 12.5-18.7 |
| Ontario | 16.6 | 13.7 | 10.7 | 10.2 | 8.4 | 8.3 | 9.3 |
| | 15.3-17.9 | 12.5-14.9 | 9.6-11.8 | 8.4-12 | 7-9.9 | 6.9-9.7 | 7.8-10.9 |
| Manitoba | 19.7 | 14.1 | 10 | 10 | E17.5 | E12.1 | E7.6 |
| | 16.2-23.2 | 11-17.1 | 7.2-12.7 | 7-13 | 11.3-23.6 | 7-17.1 | 3.8-11.3 |
| Saskatchewan | 20.5 | 15.3 | 13.1 | 14.4 | 21.3 | 15 | E11.2 |
| | 18-23.1 | 12.4-18.3 | 10.6-15.6 | 9.9-18.9 | 15.9-26.6 | 10.6-19.4 | 7.4-15.1 |
| Alberta | 17.9 | 14 | 10.9 | 11.7 | 11.3 | 12.7 | 14.1 |
| | 15.8-20.1 | 11.5-16.4 | 8.9-13 | 8.5-14.9 | 8.2-14.3 | 8.6-16.7 | 10.7-17.5 |
| British Columbia | 11.4 | 9.9 | 10 | 11.5 | 9.3 | 8.6 | 8.6 |
| | 9.8-13 | 8.3-11.6 | 8.2-11.8 | 8.5-14.5 | 7-11.5 | 6.2-11.1 | 6.1-11.1 |

Statistics Canada: Canadian Community Health Survey, 2009; E=Interpret with caution; F=failed

Sources:

Canadian Community Health Survey, Statistics Canada. Cycle 1.1, 2.1, 3.1 2007, 2008, 2009 and 2010